

Capturing the Skew in Interest Rate Derivatives: A Shifted Lognormal LIBOR Model with Uncertain Parameters

Eymen Errais *
Stanford University

Gianvittorio Mauri
Banca IMI

Fabio Mercurio
Banca IMI.

November 22, 2004

1 Introduction

In the last twenty years, caps, swaptions, and other interest rate derivatives have become increasingly popular. This trend is well consolidated. In fact, as reported by the International Swaps and Derivatives Association, from the end of 2002 to mid 2003, the outstanding notional amount of interest rate swaps and options (and cross-currency swaps) grew by 24 percent (to 123.90 trillion).

The surge of trading volume in caps and swaptions urged the need for a theoretical justification for the related market formulas, which were derived by using the Black (1976) model in a seemingly unsound manner. A consistent theoretical framework for such formulas was provided in a number of papers in the mid 90's: Brace, Gatarek and Musiela (1997), Miltersen, Sandmann and Sondermann (1997) and Jamshidian (1997), who have independently proposed what is generally known as *Libor Market Model* (LMM).

In the LMM, one directly models market rates, namely the forward LIBOR rates, as driftless geometric Brownian motions under the associated forward measures. A major advantage of the LMM is the possibility of calibrating (at-the-money) caps volatilities automatically and (at-the-money) swaptions volatilities through efficient analytical approximations. These are the main reasons of the success of the LMM and explain why this model was quickly adopted by the industry.¹

However, the LMM presents the major drawback of having deterministic volatility coefficients, which are not consistent with the skew or smile effects commonly seen both in the caps and the swaptions markets. To overcome this drawback, a natural extension of the Black-Scholes (1973) setting led to the introduction of *Local Volatility Models* (LVM), where volatility is a function of the underlying asset price (forward rate) and time. These models were pioneered by Dupire (1993, 1994) and Derman and Kani (1994) who introduced this extension for equity and foreign-exchange options. Andersen and Andreasen (2000) introduced a special case of LVM, the *Constant Elasticity of Variance* (CEV), to develop an extension of the LMM for capturing the skew.²

In other lines of research, Jamshidian (1999) and Glasserman and Kou (1999) introduced an alternative extension of the LMM by adding jumps in the forward rate dynamics. Besides presenting some technical complications, these models are unsuited to generate asymmetric smiles and skews since the jump component of the forward rate dynamics typically needs to be of substantial magnitude.

More recently, Andersen and Brotherton-Ratcliffe (2001), Andersen and Andreasen (2002), Joshi and Rebon-

*We are grateful to Darrel Duffie and John Weyant from Stanford University and Roger Lee from University of Chicago for their helpful comments. Useful discussions with Dariusz Gatarek from Numerix and helpful assistance from Andrea Pallavicini from Banca IMI are gratefully acknowledged. We finally thank Aleardo Adotti, head of the Product and Business Development Group at Banca IMI, for his continuous support and encouragement.

¹In fact, many financial institution already used a discretized version of the Heath Jarrow and Morton (1992) model.

²As explained in Delbaen and Shirakawa (2002), the standard CEV model presents the drawback that its real world dynamics hit zero with positive probability.

ato (2003) and Piterbarg (2003) introduced different families of *Stochastic Volatility Models* (SVM). In these models, each forward LIBOR rate follows a process with a time-dependent local volatility function, with a stochastic volatility perturbation uniformly applied to all LIBOR rates. These models have the disadvantage of being over-parameterized and not easy to implement as far as hedging is concerned.

The models LVMs, LMMs with jumps or SVMs, however, are not the only extensions of the lognormal LMM allowing for smile- or skew-shaped implied volatilities. In fact it turns out that it is possible to introduce stochasticity in the volatility in a very simple and intuitive manner, so as to accommodate the market implied volatility surfaces while preserving a great deal of analytical tractability. This extension of the LMM was independently proposed by Gatarek (2003) and Brigo, Mercurio and Rapisarda (2004). In their approach, the forward rate dynamics are given by displaced geometric Brownian motions where the model parameters are not known at the initial time, but are discrete random variables whose values are drawn at an infinitesimal time. We refer to this model as to a Shifted Lognormal LIBOR Model with Uncertain Parameters (SLLMUP).

The shifts in the SLLMUP are used to capture the skew effect commonly seen in the caps market, whereas the uncertain volatility component allows us to obtain more symmetric implied volatility structures. Accommodating the market smiles and skews is essential for complex-derivatives traders, who use plain-vanilla options to build their set of hedging instruments.

In this chapter, we extend Gatarek’s one-factor SLLMUP to the multi-factor case and analyze its analytical tractability by deriving caps and swaptions prices in closed form. We then illustrate how the model can accommodate market caps data and how the instantaneous correlation parameters can be used for a calibration to swaptions prices. In fact, incorporating as much information as possible coming from swaptions quotes can be extremely important in the pricing of a number of exotic interest rate derivatives. To this end, we introduce a general and tractable correlation structure for forward rates to build the bridge between caps and swaptions and complete the “circle” of the joint calibration.

We finally analyze some important model’s implications: i) we infer the swaptions smile implied by our joint calibration, and ii) we plot the evolution of some forward volatilities implied by the model.

The remainder of this chapter is organized as follows. Section 2 sets up the characteristics of the SLLMUP. Section 3 describes in detail how to perform the calibration to the caps market. Section 4 addresses the swaption valuation issue. Section 5 explains how to build the bridge between the caps and swaptions markets. Section 6 discusses some numerical results.

2 The Model

Let $\mathcal{T} = \{T_0, \dots, T_M\}$ be a set of times and $\{\tau_0, \dots, \tau_M\}$ the corresponding year fractions, meaning that τ_k is the year fraction for the interval (T_{k-1}, T_k) . We set $T_{-1} := 0$.

We consider a family of spanning forward rates F_k with expiry T_{k-1} and maturity T_k , $k = 1, \dots, M$:

$$F_k(t) := F(t; T_{k-1}, T_k) = \frac{P(t, T_{k-1}) - P(t, T_k)}{\tau_k P(t, T_k)}$$

with $P(t, T)$ denoting the time- t price of the zero-coupon bond with maturity T .

We denote by Q^k the T_k -forward measure, i.e. the probability measure associated with the numeraire $P(\cdot, T_k)$, and by E^k the related expectation. We then denote by Q^d the spot LIBOR measure, namely the probability measure associated with the discretely rebalanced bank-account numeraire B_d :

$$B_d(t) = \frac{P(t, T_{m-1})}{\prod_{j=0}^{m-1} P(T_{j-1}, T_j)}, \quad T_{m-2} < t \leq T_{m-1}$$

and by E^d the related expectation. The measure Q^d is the natural generalization of the classical risk-neutral measure to the LMM case, where the rates one models are simply compounded over finite time intervals.

By definition, the forward rate F_k is a martingale under Q^k . To model the forward rates dynamics, therefore, is enough to model their diffusion coefficients. For instance, in a shifted lognormal LMM, one assumes the following diffusion coefficient for F_k :

$$\sigma_k(t) [F_k(t) + \alpha_k],$$

where α_k is a constant and σ_k is a deterministic function of time.

Once the volatility of forward rates has been defined, one then selects a particular measure under which considering the joint evolution of all rates. A quite common and convenient choice is the spot LIBOR measure, which is independent of the payoff to price. Since the drift of each forward rate under a given numeraire is readily obtained through the usual change of numeraire technique, one can directly postulate the joint evolution of all F_k , $k = 1, \dots, M$, under Q^d .

Let us now assume that the forward rates F_k , $k = 1, \dots, M$, evolve under Q^d as in the SLLMUP. The SLLMUP was first introduced by Gatarek (2003) under a one-factor formulation.³ In this chapter, we straightforwardly extend Gatarek's approach to the multi-factor case. Precisely, we assume that:

$$dF_k(t) = \sigma_k^I(t)(F_k(t) + \alpha_k^I) \sum_{j=\beta(t)}^k \frac{\tau_j \rho_{j,k} \sigma_j^I(t)(F_j(t) + \alpha_j^I)}{1 + \tau_j F_j(t)} dt + \sigma_k^I(t)(F_k(t) + \alpha_k^I) dZ_k^d(t) \quad (1)$$

where

- $\beta(t) = \min\{i : t < T_{i-1}\}$, namely $\beta(t) = m$ if $T_{m-2} \leq t < T_{m-1}$;
- Z^d is an M -dimensional Brownian motion with $dZ_i^d(t) dZ_j^d(t) = \rho_{i,j} dt$;
- I is a random variable that is independent of Z^d and takes values in the set $\{1, 2, \dots, N\}$ with $Q^d(I = i) = \lambda_i$, $\lambda_i > 0$ and $\sum_{i=1}^N \lambda_i = 1$. The value of the random index I is drawn at time $t = 0^+$, namely at an infinitesimal time after time zero;
- σ_k^i are (given) deterministic functions;
- α_k^i are (given) real constants.

The intuition behind this model is as follows. The SLLMUP is a LIBOR model where the forward rates (instantaneous) volatilities and displacements parameters are unknown (at time 0) and one assumes different scenarios for them. The volatilities and the displacements will be known immediately after time 0.

The initial lack of knowledge on the true parameters values, which are “magically” revealed an instant later we apply our pricing model, can be a rather disturbing feature, especially for somebody pretending meaningful dynamics also from an historical point of view. Our support to the SLLMUP lies on two grounds. First, the SLLMUP can be viewed as a simplified version of a more general (and realistic) regime-switching model, where the model parameters, following Markov chains, can switch continually from one state to another. For many practical applications, however, the general model is too cumbersome and assuming a unique instantaneous change is already enough for capturing lots of desirable market features. Second, we believe that a model should be judged also in terms of its implications and not only in terms of its assumptions. For instance, though the SLLMUP implied volatilities flatten out immediately in the future, the forward volatilities retain a realistic shape and hedging with the model is not necessarily a gamble. In the following sections, we will provide some empirical evidence supporting our claims.

Besides its intuitive meaning, the SLLMUP has several advantages. It enjoys a great deal of analytical tractability, is relatively easy to implement and is flexible enough to accommodate general implied volatility surfaces in the caps market. This will be explained in the following, where practical examples with market data will be also considered, along with the analysis of some possible implications of the model.

³Brigo, Mercurio and Rapisarda (2004) proposed a similar approach in a more general setting.

3 Calibration to Caplets

In this section we show how to calculate analytically prices of caplets in the SLLMUP, and explain how to perform, accordingly, the calibration to market volatilities.

A T_{k-1} -caplet is an option on a future LIBOR rate, set at time T_{k-1} and paid at time T_k . Its payoff at time T_k can be written as

$$\tau_k [F_k(T_{k-1}) - K]^+,$$

so that the caplet can also be viewed as an option on the related forward rate.

From (1), we immediately get that the dynamics of F_k under Q^k are

$$dF_k(t) = \sigma_k^I(t) (F_k(t) + \alpha_k^I) dZ_k(t), \quad (2)$$

where Z_k is a Brownian motion under Q^k , and I has under Q^k the same distribution as under Q^d .⁴

Standard no-arbitrage pricing implies that the caplet price at time $t = 0$ is:

$$\text{Cpl}^{\text{SLLMUP}}(T_{k-1}, T_k, \tau_k, K) = \tau_k P(0, T_k) E^k \left[(F_k(T_{k-1}) - K)^+ \right],$$

which, by applying an iterated conditioning, reads as

$$\begin{aligned} \text{Cpl}^{\text{SLLMUP}}(T_{k-1}, T_k, \tau_k, K) &= \tau_k P(0, T_k) E^k \left[E^k \left[(F_k(T_{k-1}) - K)^+ | I \right] \right] \\ &= \tau_k P(0, T_k) E^k \left[E^k \left[(F_k(T_{k-1}) + \alpha_k^I - (K + \alpha_k^I))^+ | I \right] \right] \\ &= \tau_k P(0, T_k) \sum_{i=1}^N \lambda_i E^k \left[(F_k(T_{k-1}) + \alpha_k^I - (K + \alpha_k^I))^+ | I = i \right] \end{aligned}$$

Since F_k evolves according to (2), conditional on I , $F_k(T_{k-1}) + \alpha_k^I$ is a lognormal random variable. The last expectation, therefore, is nothing but the adjusted Black's caplet price that comes from a shifted geometric Brownian motion (GBM):

$$\text{Cpl}^{\text{SLLMUP}}(T_{k-1}, T_k, \tau_k, K) = \tau_k P(0, T_k) \sum_{i=1}^N \lambda_i \text{Bl}^{\text{call}}(K + \alpha_k^i, F_k(0) + \alpha_k^i, V_k^i(T_{k-1}))$$

where $V_k^i(T_{k-1}) = \sqrt{\int_0^{T_{k-1}} \sigma_k^i(s)^2 ds}$ and $\text{Bl}^{\text{call}}(K, F, V)$ is the Black price of a call with a strike K , forward price F , volatility V , maturity 1 and risk free rate 0:

$$\text{Bl}^{\text{call}}(K, F, V) = F \Phi \left(\frac{\ln(F/K) + V^2/2}{V} \right) - K \Phi \left(\frac{\ln(F/K) - V^2/2}{V} \right),$$

where Φ denotes the standard normal distribution function. An analogous definition holds for Bl^{put} .

To describe the calibration problem one has to deal with, we remember that, in the market, caplets are priced through Black's formula:

$$\text{Cpl}^{\text{Mkt}}(T_{k-1}, T_k, \tau_k, K) = \tau_k P(0, T_k) \text{Bl}^{\text{call}} \left(K, F_k(0), V^{\text{impl}}(T_{k-1}, K) \sqrt{T_{k-1}} \right)$$

where $V^{\text{impl}}(T_{k-1}, K)$ is the market implied volatility of a caplet maturing at T_{k-1} with strike K .

Setting $\Phi_k := (V_k^1(T_{k-1}), \dots, V_k^N(T_{k-1}), \alpha_k^1, \dots, \alpha_k^N)$, the calibration to market caplets data is achieved by determining Φ_k as follows:

$$\Phi_k = \arg \min \left[\sum_j g \left(\text{Cpl}^{\text{Mkt}}(T_{k-1}, T_k, \tau, K_j), \text{Cpl}^{\text{SLLMUP}}(T_{k-1}, T_k, \tau, K_j) \right) \right],$$

⁴This is due to the independence between Z^d and I .

where the sum is taken over the set of strikes available for the maturity T_k (T_{k-1} -caplets), and g is some “distance” function. In our practical examples, we will set $g(x, y) = (x/y - 1)^2$. The parameters Φ_k are found iteratively starting from $k = 1$ up to $k = M$, for some a priori given values of the probabilities λ_i .

This optimization produces as output the integral of instantaneous volatilities and not their point value. Hence, we have to introduce some assumptions on the volatility functions and infer their value from the calibrated integrals V_k^i . For instance, if we assume the σ_k^i 's to be constant, we come up with the following formula:

$$\sigma_k^i = \frac{V_k^i(T_{k-1})}{\sqrt{T_{k-1}}}$$

Another possibility is to assume a functional form like $\sigma_k^i(t)^2 := [a(T_{k-1} - t) + d] \exp(-b(T_{k-1} - t)) + c$. In this case, to find the parameters a , b , c and d , we need to solve

$$V_k^i(T_{k-1}) = \int_0^{T_{k-1}} ([a(T_{k-1} - t) + d] \exp(-b(T_{k-1} - t)) + c) dt$$

For simplicity, in this paper we adopted the first (non parametric) assumption. An example of calibration to real market data will be considered in Section 6.1.1.

4 Pricing Swaptions

The swaptions market is the second main interest rate market. Swaptions are options on interest rate swaps and are priced in the market by means of a Black-like formula, see for instance Brigo and Mercurio (2001).

Many interest rate derivatives depend explicitly on swap rates or implicitly on the correlation between different LIBOR rates. To consistently price them, it is advisable to incorporate, in the valuation process, as much information as possible coming from the quoted swaption prices.

Obtaining accurate and fast approximations to the prices of European swaptions is crucial for an efficient calibration. While swaption prices in a LIBOR model should be calculated through a Monte Carlo simulation, it is however possible to derive efficient analytical approximations for them. The same applies to the SLLMUP, as we show in the following.

4.1 An Approximated Analytical Formula

In this section, we propose an approximation of swaption prices based on the classical “freezing” technique, which was first employed in the plain LMM case: When expressing a forward swap rate as a weighted average of spanning forward rates, one “freezes” the weights at their time-0 value, so as to obtain a linear combination with constant parameters. This approximation is similar in spirit to the one proposed by Gatarek (2003) in the one-factor case.

The forward swap rate $S_{\alpha, \beta}(t)$ at time t for the set of times T_α, \dots, T_β is defined by

$$S_{\alpha, \beta}(t) = \frac{P(t, T_\alpha) - P(t, T_\beta)}{\sum_{k=\alpha+1}^{\beta} \tau_k P(t, T_k)}$$

which can be written as a linear combination of consecutive forward rates as:

$$S_{\alpha, \beta}(t) = \frac{\sum_{k=\alpha+1}^{\beta} \tau_k P(t, T_k) F_k(t)}{\sum_{k=\alpha+1}^{\beta} \tau_k P(t, T_k)} = \sum_{k=\alpha+1}^{\beta} \omega_k(t) F_k(t)$$

where

$$\omega_k(t) = \frac{\tau_k P(t, T_k)}{\sum_{h=\alpha+1}^{\beta} \tau_h P(t, T_h)}$$

The forward swap rate $S_{\alpha,\beta}(t)$ is a martingale under the forward swap measure $Q^{\alpha,\beta}$, which is the measure associated with the numeraire $\sum_{k=\alpha+1}^{\beta} \tau_k P(t, T_k)$. Applying Ito's lemma, and noting that $S_{\alpha,\beta}(t)$ is a smooth function of the forward rates $F_{\alpha+1}, \dots, F_{\beta}$, we obtain the following dynamics for $S_{\alpha,\beta}$ under the measure $Q^{\alpha,\beta}$:

$$\begin{aligned} dS_{\alpha,\beta}(t) &= \sum_{k=\alpha+1}^{\beta} \frac{\partial S_{\alpha,\beta}(t)}{\partial F_k(t)} \sigma_k^I(t) (F_k(t) + \alpha_k^I) dZ_k^{\alpha,\beta}(t) \\ &=: \sum_{k=\alpha+1}^{\beta} \gamma_k(t) dZ_k^{\alpha,\beta}(t) \end{aligned}$$

The terms γ_k can be approximated by neglecting the dependence of $\omega_k(t)$ on $F_k(t)$. We thus obtain:

$$\begin{aligned} \gamma_k(t) &\approx \frac{\tau_k P(t, T_k) \sigma_k^I(t) (F_k(t) + \alpha_k^I)}{\sum_{h=\alpha+1}^{\beta} \tau_h P(t, T_h)} \\ &= \frac{\tau_k P(t, T_k) \sigma_k^I(t) (F_k(t) + \alpha_k^I)}{\sum_{h=\alpha+1}^{\beta} \tau_h P(t, T_h) (F_h(t) + \alpha_h^I)} \frac{\sum_{h=\alpha+1}^{\beta} \tau_h P(t, T_h) (F_h(t) + \alpha_h^I)}{\sum_{h=\alpha+1}^{\beta} \tau_h P(t, T_h)} \\ &= \frac{\tau_k P(t, T_k) \sigma_k^I(t) (F_k(t) + \alpha_k^I)}{\sum_{h=\alpha+1}^{\beta} \tau_h P(t, T_h) (F_h(t) + \alpha_h^I)} \left[S_{\alpha,\beta}(t) + \frac{\sum_{h=\alpha+1}^{\beta} \tau_h P(t, T_h) \alpha_h^I}{\sum_{h=\alpha+1}^{\beta} \tau_h P(t, T_h)} \right]. \end{aligned}$$

This last expression can be further approximated by freezing the forward rates and the discount factors at their time 0 values:

$$\begin{aligned} \gamma_k &\approx \frac{\tau_k P(0, T_k) \sigma_k^I(t) (F_k(0) + \alpha_k^I)}{\sum_{h=\alpha+1}^{\beta} \tau_h P(0, T_h) (F_h(0) + \alpha_h^I)} \left[S_{\alpha,\beta}(t) + \frac{\sum_{h=\alpha+1}^{\beta} \tau_h P(0, T_h) \alpha_h^I}{\sum_{h=\alpha+1}^{\beta} \tau_h P(0, T_h)} \right] \\ &=: \gamma_k^I(t) [S_{\alpha,\beta}(t) + \eta_{\alpha,\beta}^I] \end{aligned}$$

Therefore, the dynamics of $S_{\alpha,\beta}(t)$ under $Q^{\alpha,\beta}$ approximately reads as :

$$\begin{aligned} dS_{\alpha,\beta}(t) &= \sum_{k=\alpha+1}^{\beta} \gamma_k^I(t) [S_{\alpha,\beta}(t) + \eta_{\alpha,\beta}^I] dZ_k^{\alpha,\beta}(t) \\ &= [S_{\alpha,\beta}(t) + \eta_{\alpha,\beta}^I] \sum_{k=\alpha+1}^{\beta} \gamma_k^I(t) dZ_k^{\alpha,\beta}(t) \\ &= \gamma_{\alpha,\beta}^I(t) [S_{\alpha,\beta}(t) + \eta_{\alpha,\beta}^I] dW_I^{\alpha,\beta}(t) \end{aligned}$$

where $\gamma_{\alpha,\beta}^I(t) = \sqrt{\sum_{k,h=\alpha+1}^{\beta} \gamma_k^I(t) \gamma_h^I(t) \rho_{k,h}}$ and $dW_I^{\alpha,\beta}(t) = \frac{\sum_{k=\alpha+1}^{\beta} \gamma_k^I(t) dZ_k^{\alpha,\beta}(t)}{\gamma_{\alpha,\beta}^I(t)}$.

It can be verified easily that, conditional on I , $W_I^{\alpha,\beta}$ is a Brownian motion, so that if we define $X^I(t)$ by:

$$X_{\alpha,\beta}^I(t) := S_{\alpha,\beta}(t) + \eta_{\alpha,\beta}^I$$

we see that, conditional on I , $X_{\alpha,\beta}^I$ is a GBM whose dynamics is given by

$$dX_{\alpha,\beta}^I(t) = \gamma_{\alpha,\beta}^I(t) X_{\alpha,\beta}^I(t) dW_I^{\alpha,\beta}(t)$$

Having identified a GBM, we can easily price swaptions at time $t = 0$, as we did for the previous caplet case.

A payer (resp. receiver) swaption with maturity T_{α} , payment times $T_{\alpha}, \dots, T_{\beta}$ and strike K is the option to enter at time T_{α} an interest rate swap where, on each payment time T_k , we pay (resp. receive) the fixed rate

K and receive (resp. pay) the LIBOR rate $F_k(T_{k-1})$. The payer swaption price can be calculated by taking expectation under the swap measure $Q^{\alpha,\beta}$:

$$\begin{aligned} \text{PSwptn}(\alpha, \beta, K)^{\text{SLLMUP}} &= \sum_{h=\alpha+1}^{\beta} \tau_h P(0, T_h) E^{\alpha,\beta} \left[(S_{\alpha,\beta}(T_\alpha) - K)^+ \right] \\ &= \sum_{h=\alpha+1}^{\beta} \tau_h P(0, T_h) E^{\alpha,\beta} \left[(X_{\alpha,\beta}^I(T_\alpha) - (K + \eta_{\alpha,\beta}^I))^+ \right] \\ &= \sum_{h=\alpha+1}^{\beta} \tau_h P(0, T_h) \sum_{i=1}^N \lambda_i E^{\alpha,\beta} \left[(X_{\alpha,\beta}^I(T_\alpha) - (K + \eta_{\alpha,\beta}^I))^+ \mid I = i \right], \end{aligned}$$

where $E^{\alpha,\beta}$ denotes expectation under $Q^{\alpha,\beta}$. We obtain:

$$\text{PSwptn}(\alpha, \beta, K)^{\text{SLLMUP}} = \sum_{h=\alpha+1}^{\beta} \tau_h P(0, T_h) \sum_{i=1}^N \lambda_i \text{Bl}^{\text{call}} [K + \eta_{\alpha,\beta}^i, S_{\alpha,\beta}(t) + \eta_{\alpha,\beta}^i, \Gamma_{\alpha,\beta}^i] \quad (3)$$

where $\Gamma_{\alpha,\beta}^i = \sqrt{\int_0^{T_\alpha} [\gamma_{\alpha,\beta}^i(s)]^2 ds} = \sqrt{\sum_{k,h=\alpha+1}^{\beta} \rho_{k,h} \int_0^{T_\alpha} \gamma_k^i(s) \gamma_h^i(s) ds}$.

Analogously, the price of a receiver swaption is given by

$$\text{RSwptn}(\alpha, \beta, K)^{\text{SLLMUP}} = \sum_{h=\alpha+1}^{\beta} \tau_h P(0, T_h) \sum_{i=1}^N \lambda_i \text{Bl}^{\text{put}} [K + \eta_{\alpha,\beta}^i, S_{\alpha,\beta}(t) + \eta_{\alpha,\beta}^i, \Gamma_{\alpha,\beta}^i] \quad (4)$$

Similarly to what we have in the caplet case, therefore, the SLLMUP swaption price is nothing but a mixture of adjusted Black's swaption prices.

4.2 Monte Carlo Swaption Price

To verify the accuracy of our swaption price approximation, we compare the analytical formula (3) with the price obtained by Monte Carlo simulation. We now illustrate how this simulation is performed.

We use as reference measure the spot LIBOR measure Q^d . The swaption price, at time zero, under such a measure is given by:

$$\text{PSwptn}(\alpha, \beta, K)^{\text{MC}} = E^d \left[\frac{(S_{\alpha,\beta}(T_\alpha) - K)^+ \sum_{h=\alpha+1}^{\beta} \tau_h P(T_\alpha, T_h)}{B_d(T_\alpha)} \right].$$

This expectation can be calculated numerically by simulating the values, at time T_α , of the forward rates spanning the swap rate interval:

$$F_{\alpha+1}(T_\alpha), F_{\alpha+2}(T_\alpha), \dots, F_\beta(T_\alpha).$$

These forward rates F_k evolve under Q^d according to (1), namely

$$dF_k(t) = \sigma_k^I(t)(F_k(t) + \alpha_k^I) \sum_{j=\beta(t)}^k \frac{\tau_j \rho_{j,k} \sigma_j^I(t)(F_j(t) + \alpha_j^I)}{1 + \tau_j F_j(t)} dt + \sigma_k^I(t)(F_k(t) + \alpha_k^I) dZ_k^d(t)$$

where Z^d is a $(\beta - \alpha)$ -dimensional Brownian motion with $dZ_i^d(t) dZ_j^d(t) = \rho_{i,j} dt$. We can thus generate $F_{\alpha+1}(T_\alpha), F_{\alpha+2}(T_\alpha), \dots, F_\beta(T_\alpha)$ by means of consecutive Euler approximations as follows:

$$\begin{aligned} F_k(t + \Delta t) - F_k(t) &= \sigma_k^I(t)(F_k(t) + \alpha_k^I) \sum_{j=\beta(t)}^k \frac{\tau_j \rho_{j,k} \sigma_j^I(t)(F_j(t) + \alpha_j^I)}{1 + \tau_j F_j(t)} \Delta t \\ &\quad + \sigma_k^I(t)(F_k(t) + \alpha_k^I)(Z_k^\alpha(t + \Delta t) - Z_k^\alpha(t)). \end{aligned}$$

However, there exists a more efficient way to generate our forward rates. Set $\bar{F}_k^{\alpha,I}(t) := F_k(t) + \alpha_k^I$. By Ito's lemma, we have:

$$d \ln \bar{F}_k^{\alpha,I}(t) = \sigma_k^I(t) \sum_{j=\beta(t)}^k \frac{\tau_j \rho_{j,k} \sigma_j^I(t) \bar{F}_j^{\alpha,I}(t)}{1 + \tau_j (\bar{F}_j^{\alpha,I}(t) - \alpha_j^I)} dt - \frac{\sigma_k^I(t)^2}{2} dt + \sigma_k^I(t) dZ_k^\alpha(t).$$

This process has the advantage of having a deterministic diffusion coefficient, so that the Euler scheme for it coincides with the more sophisticated Milstein scheme. The interested reader is referred to Klöden and Platen (1995) for further developments on this subject.

Our simulation is performed by first randomly drawing a value i of I and then generating paths of the processes $\bar{F}_k^{\alpha,i}$ as follows:

$$\begin{aligned} \ln \bar{F}_k^{\alpha,i}(t + \Delta t) - \ln \bar{F}_k^{\alpha,i}(t) &= \sigma_k^i(t) \sum_{j=\beta(t)}^k \frac{\tau_j \rho_{j,k} \sigma_j^i(t) \bar{F}_j^{\alpha,i}(t)}{1 + \tau_j (\bar{F}_j^{\alpha,i}(t) - \alpha_j^i)} \Delta t \\ &\quad - \frac{\sigma_k^i(t)^2}{2} \Delta t + \sigma_k^i(t) (Z_k^\alpha(t + \Delta t) - Z_k^\alpha(t)). \end{aligned}$$

Once the forward rates are simulated for the value i of the random index, we can evaluate the normalized swaption payoff

$$\frac{(S_{\alpha,\beta}(T_\alpha; i) - K)^+ \sum_{h=\alpha+1}^\beta \tau_h P(T_\alpha, T_h; i)}{B_d(T_\alpha; i)}$$

along each trajectory and finally average the resulting values over all simulated paths. This leads to the Monte Carlo price of the swaption:

$$\text{PSwptn}(\alpha, \beta, K)^{\text{MC}} = \frac{1}{n} \sum_{j=1}^n \frac{(S_{\alpha,\beta}(T_\alpha; i, w_j) - K)^+ \sum_{h=\alpha+1}^\beta \tau_h P(T_\alpha, T_h; i, w_j)}{B_d(T_\alpha; i, w_j)}$$

where w_j denotes the j -th path and n is the total number of simulations.

To test the accuracy of our approximation, we will compare the analytical price (3) with the 99% Monte Carlo confidence interval:

$$\text{PSwptn}(\alpha, \beta, K)^{\text{SLLMUP}} \in \left[\text{PSwptn}(\alpha, \beta, K)^{\text{MC}} - 2.576 \frac{\sigma_{\text{PSwptn}}^{\text{MC}}}{\sqrt{n}}, \text{PSwptn}(\alpha, \beta, K)^{\text{MC}} + 2.576 \frac{\sigma_{\text{PSwptn}}^{\text{MC}}}{\sqrt{n}} \right],$$

where $\sigma_{\text{PSwptn}}^{\text{MC}}$ is the standard deviation of the Monte Carlo price.

The accuracy test can also be performed on implied volatilities rather than on prices. To this end, we recall that the swaption's market price, at time 0, is given by Black's formula :

$$\text{PSwptn}(\alpha, \beta, K)^{\text{Mkt}} = \text{Bl}^{\text{call}} \left(K, S_{\alpha,\beta}(0), \sigma_{\alpha,\beta} \sqrt{T_\alpha} \right) \sum_{h=\alpha+1}^\beta \tau_h P(0, T_h).$$

The SLLMUP implied volatility is defined as the parameter $\sigma_{\alpha,\beta}$ to plug into this market formula to match the corresponding SLLMUP swaption price. The SLLMUP implied volatility $\sigma_{\alpha,\beta}^{\text{SLLMUP}}$ is thus implicitly defined by

$$\text{Bl}^{\text{call}} \left(K, S_{\alpha,\beta}(0), \sigma_{\alpha,\beta}^{\text{SLLMUP}} \sqrt{T_\alpha} \right) = \sum_{i=1}^N \lambda_i \text{Bl}^{\text{call}} [K + \eta_{\alpha,\beta}^i, S_{\alpha,\beta}(0) + \eta_{\alpha,\beta}^i, \Gamma_{\alpha,\beta}^i]$$

A similar definition applies to the Monte Carlo implied volatility $\sigma_{\alpha,\beta}^{\text{MC}}$, which is implicitly defined by:

$$\text{Bl}^{\text{call}} \left(K, S_{\alpha,\beta}(0), \sigma_{\alpha,\beta}^{\text{MC}} \sqrt{T_\alpha} \right) \sum_{h=\alpha+1}^\beta \tau_h P(0, T_h) = \text{PSwptn}(\alpha, \beta, K)^{\text{MC}}$$

Numerical results and illustrations of these tests are presented in Section 6.2.

5 Building the Bridge: Calibration to Swaptions

As stated above, the first goal of the SLLMUP is to capture the skew that is commonly seen in caps markets. After reaching this objective, we can move further and try to calibrate the model to at-the-money (ATM) swaption prices using the extra degrees of freedom left, namely the instantaneous correlations between the forward rates in our family. More precisely, after finding σ_k^I 's and α_k^I 's through a calibration to caplet prices, as explained in Section 3, we propose a methodology to find the correlation matrix best fitting the selected swaptions prices. Clearly, a joint calibration to both interest rate markets would require an overall optimization procedure, where the parameters σ_k^I 's and α_k^I 's contribute to accommodate the swaptions implied volatilities. Here, instead, we resort to this two-stage procedure for simplicity, also because some model advantages are already evident in our simplified approach.

When calibrating correlations, our goal is not just to reproduce swaptions prices, but we would also like to provide a meaningful correlation structure that corresponds to market information. In fact, what matters in swaption pricing is the so-called *terminal* correlation and not the instantaneous one. Terminal correlation is a quantity summarizing the degree of “dependence” between forward rates at a future time, by contrast with instantaneous correlation which captures the “dependence” between (instantaneous) *changes* of different forward rates. The terminal correlation depends on the instantaneous correlations but also on the particular functions of time $\sigma_k^I(t)$'s and α_k^I 's as well. We refer the reader to Rebonato (2004) for further developments on the subject.

A typical problem faced when we perform a joint calibration to caps and swaptions is the difference between fixed payment leg tenors. Indeed, our cap forward rates are semi-annual, whereas forward swap rates are annual. Therefore, we need to find a correspondence between 6 month $\sigma_{k,.5}^I$ cap parameters and their one year swaptions counterpart $\sigma_{k,1}^I$. To this end, consider three caplets maturities S, T and N , where $0 < S < T < N$ and all 6 month spaced. Recall that the 6 month forward rates from S to T and from T to N , and the annual forward rate from S to N can be computed respectively as follows:⁵

$$F_{S,T}(t) = \frac{1}{.5} \left[\frac{P(t,S)}{P(t,T)} - 1 \right], \quad F_{T,N}(t) = \frac{1}{.5} \left[\frac{P(t,T)}{P(t,N)} - 1 \right] \quad \text{and} \quad F_{S,N}(t) = \left[\frac{P(t,S)}{P(t,N)} - 1 \right]$$

Therefore we have the following relation, see also Brigo and Mercurio (2001),

$$F_{S,N}(t) = \frac{F_{S,T}(t) + F_{T,N}(t)}{2} + \frac{F_{S,T}(t) F_{T,N}(t)}{4}$$

Applying Ito's lemma to both sides

$$\begin{aligned} dF_{S,N}(t) &= (\dots) dt + \sigma_{S,.5}^I(t) \left(\frac{F_{S,T}(t)}{2} + \frac{F_{S,T}(t) F_{T,N}(t)}{4} \right) dZ_T(t) \\ &\quad + \sigma_{T,.5}^I(t) \left(\frac{F_{T,N}(t)}{2} + \frac{F_{S,T}(t) F_{T,N}(t)}{4} \right) dZ_N(t), \end{aligned}$$

where Z_T and Z_N are two standard Brownian motions with instantaneous correlation $\rho_{T,N}$.

We assume, for the moment, that the shift parameters α are all zero. Equating the (instantaneous) quadratic variation of both sides in the last equation, and dividing $F_{S,N}^2(t)$, we obtain:

$$\sigma_{S,1}^I(t)^2 = u_1(t)^2 \sigma_{S,.5}^I(t)^2 + u_2(t)^2 \sigma_{T,.5}^I(t)^2 + 2\rho_{T,N} u_1(t) u_2(t) \sigma_{S,.5}^I(t) \sigma_{T,.5}^I(t)$$

where $u_1(t) = \frac{1}{F_{S,N}(t)} \left[\frac{F_{S,T}(t)}{2} + \frac{F_{S,T}(t) F_{T,N}(t)}{4} \right]$ and $u_2(t) = \frac{1}{F_{S,N}(t)} \left[\frac{F_{T,N}(t)}{2} + \frac{F_{S,T}(t) F_{T,N}(t)}{4} \right]$.

If we “freeze” all F 's and hence all u 's at their initial time zero value, we come up with the following approximation for the σ parameters of the one-year long forward rate:

$$\sigma_{S,1}^I(t)^2 \approx u_1(0)^2 \sigma_{S,.5}^I(t)^2 + u_2(0)^2 \sigma_{T,.5}^I(t)^2 + 2\rho_{T,N} u_1(0) u_2(0) \sigma_{S,.5}^I(t) \sigma_{T,.5}^I(t)$$

⁵We assume, for simplicity, that the year fractions for semi-annual and annual rates are 0.5 and 1, respectively.

To determine the α parameters of the annual forward rate $F_{S,N}$, we simply set $\alpha_{S,1}^I = \alpha_{S,5}^I$ where $\alpha_{S,5}^I$ is the α parameter for the semi-annual forward rate $F_{S,T}$. This is also motivated by a preliminary work showing that, on each scenario, the values of α_k^I are not too different (same order of magnitude).

After providing a rule for converting semi-annual parameters into annual ones, we now need to parameterize our instantaneous correlation matrix to proceed to the calibration to swaptions prices. Modelling the instantaneous correlation should be tackled with caution. First of all, obviously, one must maintain the properties of a correlation matrix $\rho = (\rho_{i,j})_{i,j}$, namely :

1. Symmetry: $\rho_{i,j} = \rho_{j,i}$, for all i and j .
2. Positive semi-definiteness: $x' \rho x \geq 0$, for any $x \in \mathbb{R}^M$, where x' denotes the transpose of x .
3. Unitary diagonal elements: $\rho_{i,i} = 1$ for every i .

Moreover, when it comes to forward rates, there are additional characteristics, based on empirical observation, we would like their correlations to possess. Among these properties, the correlation matrix should display some time decay, i.e. the correlation between forward rates should decrease as the time between maturities increases. Inspired by these features we propose the two-parameter correlation structure:

$$\rho_{i,j} = \bar{\rho} + (1 - \bar{\rho}) \sin \left(\frac{\pi}{2} \exp \left(-a \frac{|T_j - T_i|}{\bar{T}} \right) \right) \quad (5)$$

where $\bar{\rho}$ is the long term correlation coefficient, a is the (positive) “speed” of decorrelation, and \bar{T} is the maximum distance between any two maturities. The functional form (5) is decreasing in the difference $|T_j - T_i|$ and can lead to sigmoid shapes in the correlations.

Properties 1. and 3. are trivially verified. Property 2. needs to be treated more carefully. Indeed, we need to impose some conditions to preserve the positive semi-definiteness of the correlation matrix.

For $\bar{\rho} > 0$ and a approaching zero, we can consider the following first order Taylor expansion:

$$\begin{aligned} \rho_{i,j} &\simeq \bar{\rho} + (1 - \bar{\rho}) \sin \left(\frac{\pi}{2} \left(1 - a \frac{|T_j - T_i|}{\bar{T}} \right) \right) \\ &\simeq \bar{\rho} + (1 - \bar{\rho}) \cos \left(\frac{\pi}{2} a \frac{|T_j - T_i|}{\bar{T}} \right), \end{aligned}$$

so that we approximately have

$$\rho_{i,j} \simeq \bar{\rho} + (1 - \bar{\rho}) \cos(\theta_j - \theta_i)$$

where $\theta_l = \frac{\pi}{2} a \frac{T_l}{\bar{T}}$, for $l \in \{i, j\}$.

Since $\cos(\theta_j - \theta_i)$ defines the structure of a two-rank correlation matrix, see Rebonato (2004), then $(\rho_{i,j})$ is a positive semi-definite matrix as well.

For $\bar{\rho} > 0$ and a approaching ∞ , we instead obtain:

$$\rho_{i,j} \simeq \bar{\rho} + (1 - \bar{\rho}) \left(\frac{\pi}{2} \exp \left(-a \frac{|T_j - T_i|}{\bar{T}} \right) - \frac{1}{6} \left(\frac{\pi}{2} \exp \left(-a \frac{|T_j - T_i|}{\bar{T}} \right) \right)^3 \right) \simeq \bar{\rho}$$

and hence $(\rho_{i,j})$ is again positive semi-definite.

In our calibration to swaptions prices, we will also test the performance of Rebonato’s parametrization of correlations:

$$\rho_{i,j} = \bar{\rho} + (1 - \bar{\rho}) \exp(-a |T_j - T_i|). \quad (6)$$

Notice that, for a large enough, the above Taylor expansion approximation shows that our correlation structure is similar to Rebonato’s. However, the two formulations can be rather different for small a . This

will result in a different fitting quality to the same set of swaptions prices, as we will see in the numerical examples provided at the end of the chapter.⁶

The calibration to swaptions prices is finally performed as follows. We recall, from the previous section, the SLLMUP and market formulas for a payer swaption price, and we define Ψ to be the set of optimization parameters, i.e. we set $\Psi := (\bar{\rho}, a)$. The calibration aims at finding Ψ such that

$$\Psi = \arg \min \left(\sum_{\alpha, \beta} g \left(\text{PSwptn}(t, \alpha, \beta, K)^{\text{Mkt}}, \text{PSwptn}(t, \alpha, \beta, K)^{\text{SLLMUP}} \right) \right),$$

where α and β range over our selected ATM swaption maturities and tenors.

Some numerical results are presented in Section 6.1.2.

6 Numerical Results

In this section, we illustrate some examples of calibration of the SLLMUP to caps and swaptions market data, along the lines we previously mentioned. We also show the results of our tests on the good performance of the approximating SLLMUP formula for swaptions. We conclude by plotting a few swaptions volatility skews implied by the previous model calibration, and by showing the evolution of some forward caplet volatilities in the future.

6.1 Calibration to Market Data

We start by testing the SLLMUP on the caps market by considering different numbers of scenarios. Our numerical experiments, based on market data, show that three scenarios are usually enough for a satisfactory calibration, even though the fitting quality worsen for high strikes and low maturities.

We then move to consider swaption volatilities. As previously mentioned, our purpose is not to perform a true joint calibration, but rather to infer reasonable forward rates correlations to test the SLLMUP also in terms of the swaptions volatility skews it implies.

6.1.1 Calibration to caplet quotes

We calibrated our model to the caps volatility data quoted on 08/11/2004 in the Euro market, using caplets with a six-month tenor. The caplets strikes range from 2.5% to 7%, and are 25 basis points spaced. The caplets maturities spectrum ranges from 1.5 to 14.5 years. The volatility data used is plotted in Figure 1, while a sample of the same data is displayed in Table 1.

We used two, three and finally four different scenarios of SLLMUP parameters ($N = 2, 3, 4$), and came to the conclusion that three scenarios are usually the best choice. In fact, a two-scenarios model does not seem to accommodate the caplets skew accurately. Moreover, the marginal improvement in the fitting quality implied by a four-scenario model tends to be negligible.⁷ Therefore, in the remainder of our numerical tests, we decided to stick to a three-scenario model with a-priori given probabilities λ . Preliminary work showed, in fact, that substantially equivalent results, in terms of fitting, can be achieved through different choices for the scenarios probabilities. In our experiments, we took $\lambda_1 = .6$, $\lambda_2 = .3$ and $\lambda_3 = .1$, thus assuming a high probability scenario, an average one, and a low probability scenario.

The calibrated values of σ_k^I and α_k^I in the three different scenarios, and for maturities up to 14.5 years, are displayed in Tables 2 and 3. The resulting SLLMUP caplet volatilities are plotted in Figure 2. Figures 3 to

⁶A more accurate calibration to swaptions prices would require a less parsimonious correlation parametrization. As already pointed out, this is however beyond the scope of this chapter.

⁷This result was also shown in Brigo, Mercurio and Rapisarda (2000) who calibrated a lognormal mixture density to market foreign-exchange data.

7, instead, show a graphical comparison between the market and SLLMUP implied caplet volatilities for a few selected maturities, namely 2,3,5,10 and 12 years.

Table 1: Sample of market caplet volatilities (in %) by strike and maturity

Strike(%)—Maturity	2	2,5	3	3,5	4	4,5	5
2,5	26,32	25,68	24,77	23,99	23,53	23,18	23,04
2,75	25,04	24,43	23,6	22,85	22,44	22,13	22,03
3	23,97	23,33	22,55	21,82	21,46	21,17	21,11
3,25	23,12	22,4	21,65	20,9	20,59	20,3	20,28
3,5	22,62	21,64	20,89	20,11	19,82	19,52	19,53
3,75	22,66	21,09	20,31	19,43	19,16	18,84	18,86
4	22,81	21,04	20,04	18,91	18,62	18,26	18,28
4,25	23,075	21,17	20,11	18,795	18,42	17,87	17,86
4,5	23,34	21,3	20,18	18,68	18,22	17,48	17,44
4,75	23,7	21,54	20,36	18,795	18,3	17,5	17,4
5	24,06	21,78	20,54	18,91	18,38	17,52	17,36
5,25	24,49	22,07	20,78	19,09	18,52	17,61	17,42
5,5	24,94	22,4	21,04	19,3	18,68	17,74	17,51
5,75	25,43	22,76	21,34	19,54	18,88	17,89	17,63
6	25,94	23,14	21,65	19,8	19,1	18,06	17,77
6,25	26,48	23,55	21,99	20,08	19,33	18,26	17,93
6,5	27,04	23,97	22,35	20,38	19,59	18,47	18,11
6,75	27,62	24,42	22,73	20,7	19,86	18,7	18,3
7	28,23	24,89	23,13	21,03	20,15	18,95	18,51

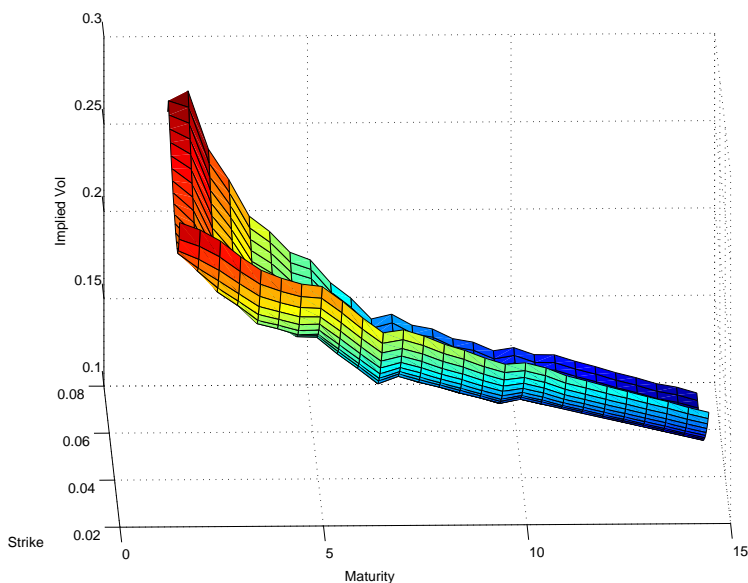


Figure 1: Market caplet volatilities as of 11 August 2004 by strike and maturity

6.1.2 Calibration to swaptions quotes

We consider the ATM swaption volatilities quoted on 08/11/2004 in the Euro market. In the SLLMUP swaption formula (3), the λ parameters have been assigned a priori, whereas the α and σ parameters for

Table 2: The calibrated values of σ_k^I for different maturities and scenarios

Caplets maturities	Scenario 1	Scenario 2	Scenario 3
1.5	0.16304434	0.06422773	0.06332962
2	0.18921474	0.05634155	0.05316215
2.5	0.16791712	0.05989887	0.05520289
3	0.17362959	0.06458859	0.06557753
3.5	0.15172758	0.03617556	0.03240995
4	0.15829939	0.04999707	0.03960524
4.5	0.14123047	0.04344321	0.03870800
5	0.14422573	0.05366341	0.04914180
5.5	0.12441415	0.05057469	0.04322650
6	0.12480429	0.05173816	0.04849220
6.5	0.10744960	0.03105830	0.02892788
7	0.12148858	0.05141806	0.04410974
7.5	0.10697440	0.04382249	0.04019843
8	0.11604050	0.04996482	0.03892146
8.5	0.10106829	0.04246569	0.04085141
9	0.10789990	0.04728225	0.04185310
9.5	0.09942587	0.04068057	0.03929327
10	0.10961703	0.04656102	0.04349751
10.5	0.09826417	0.04100323	0.04260043
11	0.10773474	0.04301775	0.04531406
11.5	0.09486490	0.03734212	0.04308718
12	0.09552005	0.03850786	0.04121609
12.5	0.09505042	0.03621755	0.03896017
13	0.09450712	0.03610641	0.04549258
13.5	0.08950882	0.03703596	0.03723106
14	0.09231341	0.03448961	0.03534253
14.5	0.08597086	0.03469210	0.03425724

annual rates are obtained, as explained in Section 5, from the semi-annual ones coming from the previous calibration to caplets. The only free parameters are the correlations ρ , which are parameterized first through Rebonato's function (6), and then according to our form (5).

Table 4 displays the data used for the calibration.⁸ Tables 5 and 6 present the calibration results with Rebonato's formula, whereas Tables 7 and 8 present the results obtained with our correlation function.

6.2 Testing the Approximation for Swaptions Prices

In this section we test the quality of the approximation (3) and the related implied volatility, by comparing their values with those coming from a Monte Carlo simulation.

In our test, we considered (payer) swaptions with a 5 year tenor. The SLLMUP parameters used in the test are those coming from the previous calibrations to caps and swaptions, with instantaneous correlations parameterized by Rebonato's function.

Tables 9, 10, 11 and 12 present the results of our analysis. In each table, we report the approximation price, the 99% confidence interval of the Monte Carlo price,⁹ and the implied volatilities associated to the approximation and the Monte Carlo prices. These tables show that our approximation is quite accurate for every considered strike, both in terms of prices and implied volatilities.

⁸The used data is just a small subset of the matrix that is typically available in the market.

⁹We simulated ten million paths with a three-month time step. We used a predictor-corrector method for the drift of the forward rates and also applied major variance-reduction techniques.

Table 3: The calibrated values of α_k^I for different maturities and scenarios

Caplets maturities	Scenario 1	Scenario 2	Scenario3
1.5	0.02801044	0.03841978	0.03326450
2	0.02091647	0.03346086	0.03674928
2.5	0.02596937	0.02426207	0.03236464
3	0.02202359	0.01782716	0.02032976
3.5	0.02776751	0.05817754	0.06401326
4	0.02418964	0.02997589	0.04818130
4.5	0.03074806	0.03732896	0.04390922
5	0.02946808	0.02161852	0.02895950
5.5	0.03719965	0.01976091	0.03170472
6	0.03330999	0.01331947	0.01965747
6.5	0.04104563	0.04570878	0.04912145
7	0.03306023	0.01305767	0.01541584
7.5	0.04193459	0.01881899	0.02348780
8	0.03346430	0.01242679	0.01402056
8.5	0.04336819	0.01611235	0.02000735
9	0.03598035	0.00976178	0.01192281
9.5	0.04088379	0.01448904	0.01933940
10	0.03408434	0.00878642	0.01169428
10.5	0.04182204	0.01214344	0.01838369
11	0.03248840	0.00903381	0.01301825
11.5	0.04134638	0.01417237	0.02011819
12	0.03909778	0.01134578	0.01687170
12.5	0.03775666	0.01239276	0.01803944
13	0.03635414	0.00716251	0.01400981
13.5	0.03920179	0.00779229	0.01037969
14	0.03476033	0.00719563	0.02012456
14.5	0.03879874	0.00730602	0.01047056

Table 4: Market ATM swaption volatilities as of 11 August 2004

Tenor—Swaption Maturity	2y	3y	4y	5y
2Y	0.201	0.179	0.163	0.15
3Y	0.187	0.168	0.153	0.142
4Y	0.174	0.157	0.144	0.134
5Y	0.163	0.147	0.135	0.127

Table 5: SLLMUP swaption volatility with Rebonato's correlation function

Tenor—Swaption Maturity	2y	3y	4y	5y
2Y	0.20268	0.18589	0.16783	0.15550
3Y	0.18438	0.17016	0.15458	0.14416
4Y	0.17016	0.15697	0.14401	0.13497
5Y	0.15774	0.14632	0.13519	0.12671

6.3 Further Model Implications

Besides the possibility of accommodating caps and swaptions quotes, the SLLMUP has two further appealing features. First, the SLLMUP allows for a definition of a possible swaption market smile or skew. In practice, swaptions are quoted ATM and quotes for away from the money swaptions are rather rare. However, practitioners who trade out of the money (OTM) and in the money (ITM) swaptions agree on pricing them with a higher volatility than the ATM one. Therefore, in the absence of OTM and ITM quotes, our model

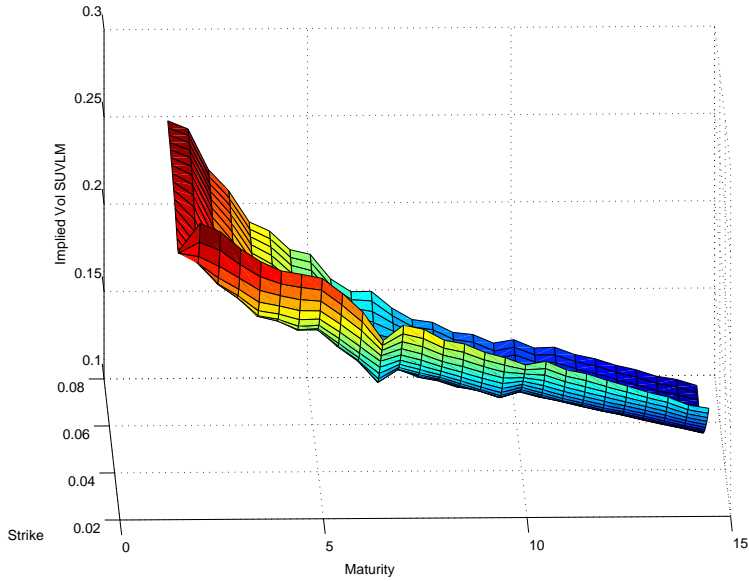


Figure 2: Calibration of the SLLMUP model with three scenarios to the caplet skew for different maturities

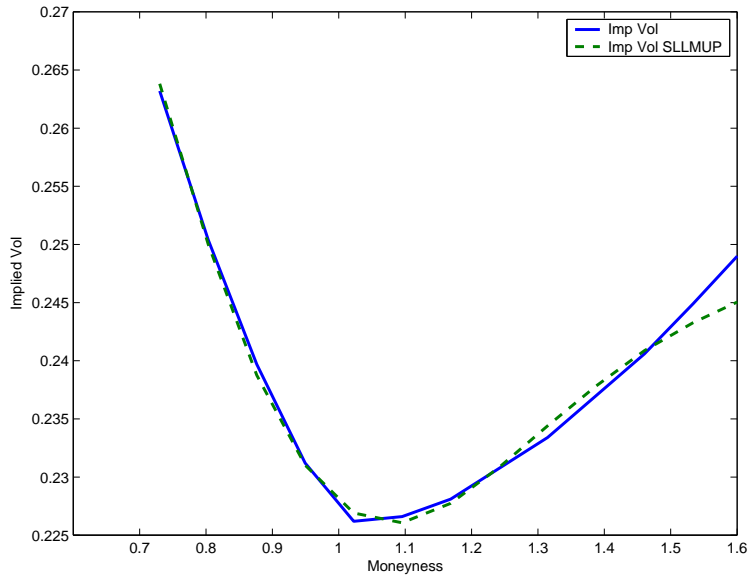


Figure 3: Calibration of the SLLMUP to the two-year maturity caplet skew

can provide a guide for practitioners to produce their quotes.

Figure 8 shows the implied volatilities curves induced by our model for they the 2x5, 3x5, 4x5, 5x5 swaptions, with the same model parameters used in the previous section to test the SLLMUP price formula. These plots should only be regarded as examples of possible implications of our model. In fact, more “realistic” curves could be obtained through a more accurate calibration to ATM swaptions prices.

Another important implication of our model is that it produces self-similar forward caplets volatilities. In

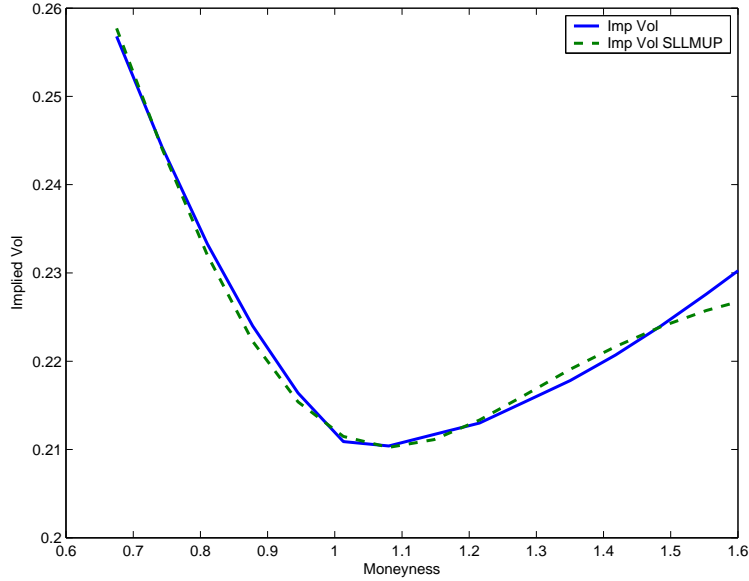


Figure 4: Calibration of the SLLMUP to the three-year maturity caplet skew

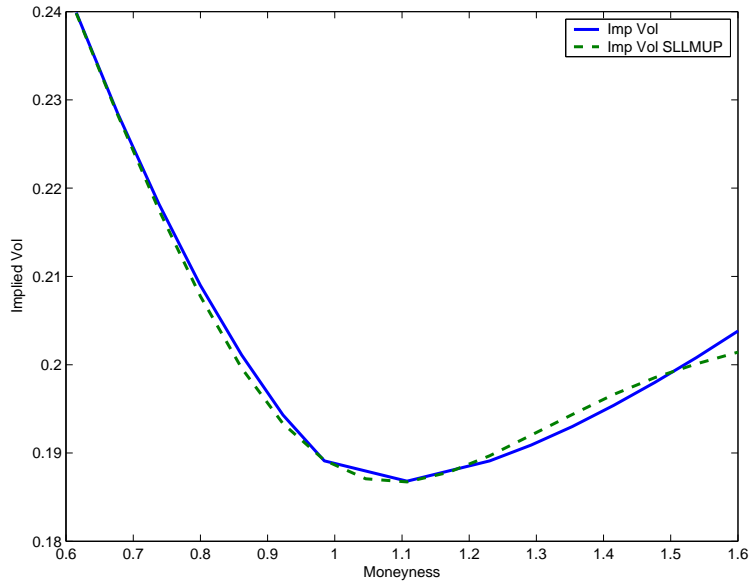


Figure 5: Calibration of the SLLMUP to the five-year maturity caplet skew

fact, the requirement of a model implying forward volatility skews that are similar to the current ones is often neglected when modelling the evolution of forward rates, since fitting caplets and swaptions market data is a more obvious and compelling goal. Having realistic forward volatility skews is important as far as pricing exotic options is concerned since it allows traders to implement a better hedging strategy for their derivatives books.

A forward implied volatility is defined as the volatility parameter to plug into the Black-Scholes formula for forward starting option (FSO) to match the model price.¹⁰ A forward start caplet (FSC) with forward start

¹⁰While in equity and foreign exchange markets FSOs are commonly traded, these derivatives are less present in the fixed

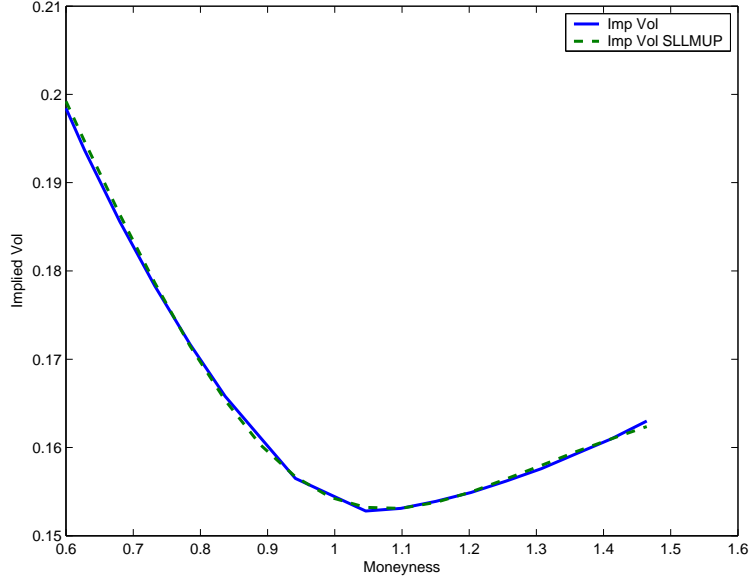


Figure 6: Calibration of the SLLMUP to the ten-year maturity caplet skew

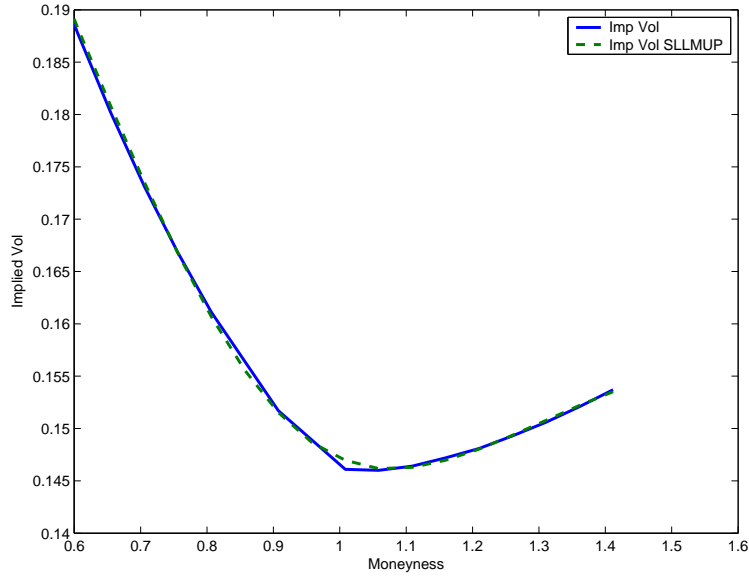


Figure 7: Calibration of the SLLMUP to the twelve-year maturity caplet skew

date T_j and maturity T_k is an option on the LIBOR rate $F_k(T_{k-1})$, with $T_{k-1} > T_j$, where the strike price is set as a proportion δ of the spot LIBOR rate at time T_j . In case of a call, the payoff at time T_k is (we assume a unit nominal amount):

$$\tau_k [F_k(T_{k-1}) - \delta F_{j+1}(T_j)]^+ . \quad (7)$$

This payoff, however, involves two different forward rates, and as such can not lead to a consistent definition of forward implied volatility. To this end, we replace (7) with the following:

$$\tau_k [F_k(T_{k-1}) - \delta F_k(T_j)]^+ . \quad (8)$$

income market.

Table 6: Correlations under Rebonato’s parametrization

$ T_j - T_i $	$\rho_{i,j}$
0	1.00000
1	0.78098
2	0.61347
3	0.48535
4	0.38737
5	0.31244
6	0.25512
7	0.21129
8	0.17777
9	0.15213
10	0.13252
11	0.11752
12	0.10605

Table 7: SLLMUP swaption volatility with our correlation function

Tenor—Swaption Maturity	2y	3y	4y	5y
2Y	0.20040	0.18379	0.16591	0.15373
3Y	0.18204	0.16799	0.15251	0.14224
4Y	0.16895	0.15596	0.14298	0.13411
5Y	0.15836	0.14699	0.13583	0.12726

Table 8: Correlations under our formulation

$ T_j - T_i $	$\rho_{i,j}$
0	1.00000
1	0.74093
2	0.59764
3	0.55401
4	0.54125
5	0.53754
6	0.53646
7	0.53614
8	0.53605
9	0.53602
10	0.53601
11	0.53601
12	0.53601

The difference between the two formulations is that in the former the strike is defined by the spot LIBOR rate at time T_j for maturity T_{j+1} , whereas in the latter formulation, it is defined by the time T_j forward LIBOR rate between T_{k-1} and T_k . Even though the payoff (8) is somehow more intuitive, it is not exchanged in the market essentially because forward rates are not directly quoted by the market but only stripped from zero-coupon bonds. The second payoff is also more convenient mathematically, since it is the difference between two values of the same “asset” computed at different times (in the former payoff we have to cope with two different LIBOR rates with two different dynamics). Having to define a forward volatility, and not to price a true market derivative, we thus stick to the payoff (8).

Following Rubinstein (1991), under a lognormal LMM, the price of a FSC at time 0 is given by

$$\text{FSCpl}(T_j, T_{k-1}, T_k, \tau_k, \delta) = \tau_k P(0, T_k) \text{Bl}^{\text{call}}\left(\delta F_k(0), F_k(0), V^{\text{impl}}(T_j, T_{k-1}) \sqrt{T_{k-1} - T_j}\right)$$

Table 9: Approximation price, MC price-window and related volatilities for a 2x5 swaption

Strikes	Approx	Confidence	Interval	ImpVol Approx	ImpVol MC
1	13.82129	13.81992	13.82305	29.69013	30.93328
1.5	11.7133	11.71163	11.7148	26.16912	26.09091
2	9.616925	9.614254	9.617442	23.74041	23.53314
2.5	7.558583	7.553763	7.556938	21.73473	21.53948
3	5.585923	5.578241	5.581351	19.80649	19.64416
3.5	3.76625	3.75582	3.758774	17.80746	17.6729
4	2.237119	2.224806	2.227436	16.19233	16.07505
4.5	1.205713	1.194609	1.196827	15.71271	15.61379
5	0.652548	0.645185	0.647076	16.18942	16.11517
5.5	0.361724	0.35747	0.359052	16.8489	16.79595
6	0.19664	0.19451	0.195787	17.29857	17.26596
6.5	0.103012	0.102198	0.103189	17.54427	17.53361
7	0.052057	0.05184	0.052581	17.6619	17.67022

Table 10: Approximation price, MC price-window and related volatilities for a 3x5 swaption

Strikes	Approx	Confidence	Interval	ImpVol Approx	ImpVol MC
1	14.41191	14.40977	14.41306	28.06964	26.61654
1.5	12.39908	12.39643	12.39975	24.68383	24.24306
2	10.402	10.39805	10.40138	22.36748	22.09171
2.5	8.444132	8.438116	8.44144	20.50211	20.30066
3	6.560787	6.552229	6.555507	18.79316	18.63539
3.5	4.796158	4.785429	4.788599	17.09941	16.97469
4	3.22747	3.215358	3.218309	15.58011	15.47835
4.5	1.998144	1.986538	1.989155	14.68867	14.60644
5	1.196614	1.187471	1.189798	14.59899	14.53471
5.5	0.731471	0.725521	0.727613	14.9988	14.95317
6	0.455184	0.451807	0.453648	15.46998	15.44153
6.5	0.280946	0.279435	0.281013	15.81599	15.80503
7	0.1699	0.169553	0.170871	16.02736	16.03384

Table 11: Approximation price, MC price-window and related volatilities for a 4x5 swaption

Strikes	Approx	Confidence	Interval	ImpVol Approx	ImpVol MC
1	14.63908	14.63835	14.64162	26.82	27.69253
1.5	12.72157	12.72022	12.72351	23.53826	23.61617
2	10.82197	10.81942	10.82273	21.30599	21.22553
2.5	8.960791	8.956455	8.959773	19.53616	19.43209
3	7.16581	7.15942	7.162715	17.95743	17.85965
3.5	5.468099	5.459839	5.463064	16.41676	16.33159
4	3.913081	3.903392	3.906463	14.93485	14.86101
4.5	2.603121	2.592899	2.595692	13.8419	13.77778
5	1.658358	1.649555	1.652049	13.4545	13.40327
5.5	1.067966	1.061611	1.063902	13.6628	13.62509
6	0.707301	0.703289	0.705397	14.0972	14.07241
6.5	0.471931	0.469642	0.471546	14.48584	14.47222
7	0.311619	0.310611	0.312297	14.75378	14.75166

where $V^{\text{impl}}(T_j, T_{k-1})$ is the time T_j -forward implied volatility for the expiry T_{k-1} .

Table 12: Approximation price, MC price-window and related volatilities for a 5x5 swaption

Strikes	Approx	Confidence	Interval	ImpVol Approx	ImpVol MC
1	14.59393	14.5914	14.59454	25.50006	24.68521
1.5	12.76953	12.7665	12.76966	22.35811	22.04726
2	10.96356	10.95958	10.96276	20.22934	20.04543
2.5	9.193978	9.188817	9.192016	18.55779	18.43177
3	7.483998	7.477476	7.480671	17.09149	16.99571
3.5	5.85859	5.850897	5.854049	15.68794	15.61252
4	4.350503	4.341947	4.344986	14.32488	14.26323
4.5	3.03345	3.024703	3.027518	13.2165	13.16572
5	2.017548	2.009981	2.012516	12.65815	12.61917
5.5	1.337118	1.331628	1.333973	12.66687	12.63976
6	0.908976	0.905317	0.907527	12.98943	12.97167
6.5	0.628781	0.626678	0.628735	13.35872	13.35002
7	0.434486	0.433625	0.435504	13.64837	13.64914

Similarly, the price of a FSC with the SLLMUP is given by

$$\begin{aligned}
 \text{FSCpl}^{\text{SLLMUP}}(T_j, T_{k-1}, T_k, \tau_k, \delta) &= \tau_k P(0, T_k) \sum_{i=1}^N \lambda_i E^k \left[\left((F_k(T_{k-1}) + \alpha_k^i) - (\delta F_k(T_j) + \alpha_k^i) \right)^+ | I = i \right] \\
 &= \tau_k P(0, T_k) \sum_{i=1}^N \lambda_i E^k \left[E^k \left[\left((F_k(T_{k-1}) + \alpha_k^i) - (\delta F_k(T_j) + \alpha_k^i) \right)^+ | \{F_k(T_j), I = i\} \right] | I = i \right] \\
 &= \tau_k P(0, T_k) \sum_{i=1}^N \lambda_i E^k \left[\text{Bl}^{\text{call}} \left(\delta F_k(T_j) + \alpha_k^i, F_k(T_j) + \alpha_k^i, V_{T_j}^i(T_{k-1}) \right) \right] \\
 &= \tau_k P(0, T_k) \sum_{i=1}^N \lambda_i \int_{-\infty}^{+\infty} \left[\text{Bl}^{\text{call}} \left(\delta F_k(T_j) + \alpha_k^i, F_k(T_j) + \alpha_k^i, V_{T_j}^i(T_{k-1}) \right) \right] d\Phi(F_k(T_j))
 \end{aligned}$$

where we set $V_{T_j}^i(T_{k-1}) = \sqrt{\int_{T_j}^{T_{k-1}} \sigma_k^i(s)^2 ds}$ and $\Phi(F_k(T_j))$ is the (lognormal) cumulative distribution function of $F_k(T_j)$ under Q^k .

The time T_j -forward implied volatility for the expiry T_{k-1} is, by definition, the parameter $V^{\text{impl}}(T_j, T_{k-1})$ that satisfies:

$$\text{FSCpl}(T_j, T_{k-1}, T_k, \tau_k, \delta) = \text{FSCpl}^{\text{SLLMUP}}(T_j, T_{k-1}, T_k, \tau_k, \delta).$$

To test the forward implied volatility generated by our model in a quick and simpler way, we assume the α_k^I 's to be equal to zero in each scenario. In this case the SLLMUP formula simplifies to

$$\text{FSCpl}^{\text{SLLMUP}}(T_j, T_{k-1}, T_k, \tau, \delta) = \tau_k P(0, T_k) \sum_{i=1}^N \lambda_i \text{Bl}^{\text{call}} \left(\delta F_k(0), F_k(0), V_{T_j}^i(T_{k-1}) \right)$$

We priced FSCs starting in one year and having maturities 2, 3, 5 and 10 years. Figure 9 shows the results of our test.

From our analysis, the SLLMUP seems to imply forward volatilities that are very similar to the current ones. Note also that a slight difference is due to the fact that we priced the FSCs by neglecting the α_k^I 's (the forward volatility graphs do not display a clear skew).

7 Conclusions

Gatarek (2003) proposed a simple one-factor stochastic volatility LMM based on parameters uncertainty. In this chapter, we have generalized Gatarek's approach to the multi factor case.

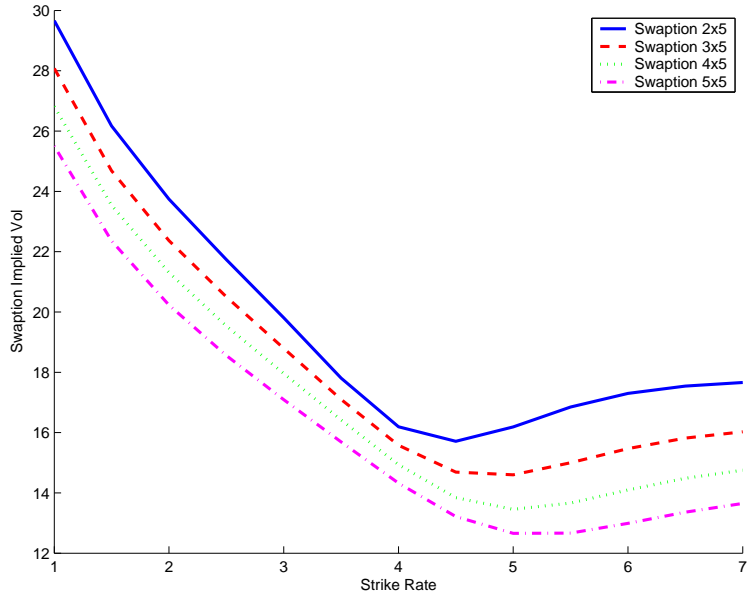


Figure 8: The implied smile for the 2 x 5, 3 x 5, 4 x 5 and 5 x 5 swaptions

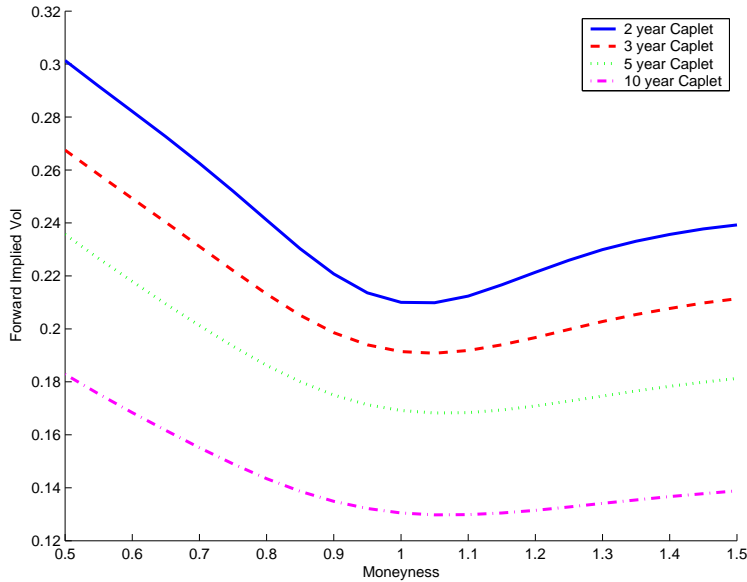


Figure 9: One year forward volatility smiles of two, three, five and ten year maturity caplets.

Besides being quite intuitive, the model is extremely easy to implement because of its tractability. In fact, caplets prices are simply equal to the weighted average of adjusted Black's caplet prices, and swaptions can be priced, in a similar fashion, through a closed-form approximation.

The model can accommodate a large variety of caplet volatility surfaces and can be simultaneously calibrated to ATM swaptions prices. This has been tested on real market data.

A seeming drawback of the model is that future implied volatilities flatten almost immediately, i.e. as soon as the random value of the model parameters is drawn a little after time zero. However, our empirical analysis shows that the forward implied volatilities induced by the model do not differ much from the current ones,

providing a further support for its use in the pricing and hedging of interest rate derivatives.

Further empirical work can be carried out by trying different parametrizations for the time-dependent functions σ_k^I . These parametrizations can be different for different scenarios. Another interesting study concerns a true joint calibration to the caps and swaptions markets, with the analysis of related implications, especially in terms of the swaptions implied volatility smile or skew.

References

- [1] Andersen L., Andreasen J. (2000), Volatility skews and extensions of the Libor Market Model, *Applied Mathematical Finance*, 7:1-32, March 2000.
- [2] Andersen, L., Andreasen J. (2002), Volatile volatilities, *RISK*, Volume 15, No. 12, p. 163-168.
- [3] Andersen L., Brotherton-Ratcliffe R. (2001), Extended LIBOR market models with stochastic volatility, Working paper, Banc of America Securities.
- [4] Andersen L., Piterbarg V. (2004), Moment Explosions in Stochastic Volatility Models, Working Paper, Bank of America.
- [5] Black, F. (1976), The pricing of commodity contracts, *Journal of Financial Economics*, 3, 167-179
- [6] Black F., Scholes M. (1973), The pricing of options and corporate liabilities, *Journal of Political Economy*, 81, 637-654.
- [7] Brace A., D. Gatarek, and M. Musiela (1997), The Market Model of Interest Rate Dynamics, *Mathematical Finance*, 7, 127-55.
- [8] Brigo D., and Mercurio F. (2001), Interest Rate Models: Theory and Practice. Springer-Verlag.
- [9] Brigo D., Mercurio F., Rapisarda F. (2000), Lognormal-mixture dynamics and calibration to market volatility smiles, working paper, Banca IMI, Milan.
- [10] Brigo D., Mercurio F., Rapisarda F. (2004), Smile at the Uncertainty, *Risk*, May.
- [11] Derman E., Kani I. (1994). Riding on a smile, *Risk*, 7 (2), 32-39.
- [12] Delbaen F.; Shirakawa H. (2002), No Arbitrage Condition for Positive Diffusion Price Processes, *Asia-Pacific Financial Markets*, vol. 9, iss. 3-4, pp. 159-168.
- [13] Dupire B. (1993), Pricing and hedging with smiles. Reech research paper.
- [14] Dupire B.(1994), Pricing with a smile, *RISK*, Volume 7, No. 1, p. 18-20.
- [15] Gatarek, D. (2003), LIBOR market model with stochastic volatility, Working Paper. Deloitte&Touche. Downloadable at:
http://papers.ssrn.com/sol3/papers.cfm?abstract_id=359001
- [16] Glasserman P., and Kou S.G. (2003): The Term Structure of Simple Forward Rates with Jump Risk; *Mathematical Finance*, Vol. 13, No. 3, (July 2003), 383-410.
- [17] Heath, D., Jarrow, R., Morton, A. (1992) , Bond Pricing and the Term Structure of Interest Rates: A New Methodology. *Econometrica* 60, 77-105.
- [18] Jamshidian, F. (1997), Libor and Swap Market Models and Measures, *Finance and Stochastics*, 1, 293-330.
- [19] Jamshidian F. (1999), Libor Market Model with Semimartingales, NetAnalytics working paper.
- [20] Joshi M. and Rebonato R. (2003), A stochastic-volatility, displaced-diffusion extension of the LIBOR market model. *Quantitative Finance* 3, 458-469.

- [21] Klöden, P.E. and Platen, E. (1995), Numerical Solutions of Stochastic Differential Equations. Springer, Berlin, Heidelberg, New York.
- [22] Miltersen K., K. Sandmann, and D. Sondermann (1997), Closed Form solutions for Term Structure Derivatives with Lognormal Interest Rates, *Journal of Finance* 409-430.
- [23] Piterbarg V. (2003), A Stochastic Volatility Forward LIBOR Model with a Term Structure of Volatility Smiles, Working Paper, Bank of America.
- [24] Rebonato R. (2004), Volatility and Correlation, John Wiley & Sons, 2nd edition.
- [25] Rubinstein M. (1991), Pay Now, Choose Later, *RISK* 4, p. 13.